




Guide to European Geophysical Services

Vital sub-surface data to help you make more informed decisions

Follow us on LinkedIn 

 office@europeangeophysical.com

 www.europeangeophysical.com  01939 210710

	CONTENTS	PAGE
For information on the reports we can supply, see page 14-15	Welcome	3
	Our office	4-5
	Fleet Capacity	5
	Water Industry	6-7
 <p>Have a question?</p> <p>See page 19 for all of the ways that you can contact us.</p>	Geotechnical	8-10
	Minerals & Gas	10-11
	Environmental & Geothermal	12-13
	Safety & Mission	16-17
	Training & Contact	18-20

ABOUT EUROPEAN GEOPHYSICAL SERVICES

European Geophysical was founded in 1994. Today we are leading borehole geophysical surveying specialists providing a broad range of measurements and services to the water, environmental, mining and geotechnical industries.

Clients include many drilling and exploration companies, most of the water companies, major engineering and site investigation companies.

This position is based on an excellent and reliable field service coupled with many years of geophysical interpretation experience, efficient data processing and high quality reporting.

WHY CHOOSE EUROPEAN GEOPHYSICAL SERVICES

European Geophysical services employs geophysicist and instrument engineers, thus providing a multi-disciplinary team to provide services customised to the clients' requirements. We have provided services in many different and difficult environments, including projects involving offshore and on difficult remote sites and have recent experience operating in Norway, Sweden, Botswana, South Africa, Ethiopia and China.

We are problem solvers

We don't just log data. On a regular basis we deploy engineering ingenuity to solve the many technical challenges that are encountered when undertaking geophysical surveys. Our data presentation format has become an accepted standard with many exploration, geotechnical, water and environmental clients.



HEAD OFFICE

Our office is located at the Stables at the Sansaw Business Park in Hadnall, just outside Shrewsbury. A newly restored and historic block, it has a workshop and technical centre, fleet of fully equipped vehicles, quality IT facilities for data processing and excellent access routes.

VEHICLE FLEET

We currently operate a fleet of vehicles and containerised units, including 4 x 4 Sprinter Vans, 4 X 4 Transporter Vans and Landrover Defenders fitted with a range of logging winches. We also have Remote Operated Vehicles with cameras for adit and submerged tunnel surveys.



FLEET CAPACITY

Vehicle Type	Quantity	Depth
Geophysical Logging Units	8 (7 with 4x4 capability)	Up to 2000m
Borehole Video Camera Units	4	Up to 1000m
Support vehicles	4	
Container Base	1	Up to 2000m
Hand Portable Units	2	Up to 400m



Surveys



We are able to survey boreholes up to 2000m and from 50mm to 10m in diameter. Our ROV unit can survey up to 400m from the point of entry into adits and tunnels.

CCTV and ROV surveys



ROV



Geophysical Logging and CCTV Surveys for water



all our staff are EUSR* water hygiene trained to always ensure the highest hygiene standards. We regularly survey active utility boreholes that are pumping into supply.

European Geophysical Services surveys on average 350 boreholes a year related to water extraction. From mineral water boreholes through to huge well and adit systems for utility companies. **Our dedicated water well units only survey clean water boreholes** and



* Please note our EUSR water hygiene course is available as external training to clients (see page 18 for details).

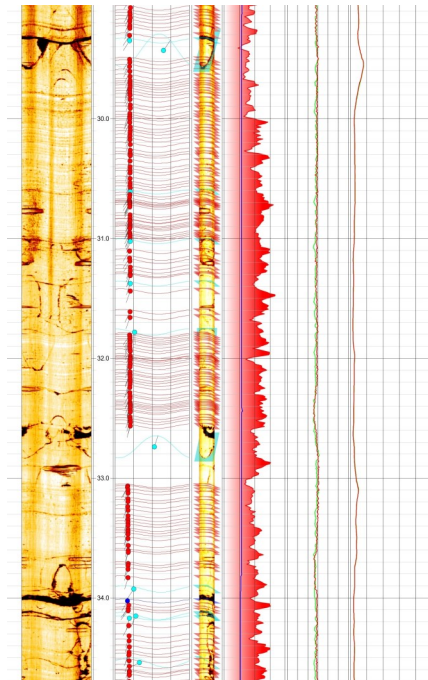




Geophysical Logging and Borehole Imaging for Geotechnical Site Investigations



European Geophysical Services has provided extensive borehole geophysical and imaging services to major engineering projects involving work in shore and on difficult remote sites. See example projects on page 9 and 10.



Project	Description
HS2 Rail link 2015–Present	We have been involved on all phases of the project, with all major contractors. To date we have successfully logged over 500 boreholes, on 55 packages, with 7 different GI contractors
Haweswater Aqueduct 2019–Present	Full suite of borehole geophysics, including Borehole Magnetic Resonance carried out in over 120 boreholes to date, working on each of the project packages with 3 GI contractors
Lower Thames Crossing 2019–Present	Full suite of borehole geophysics, including Optical and Acoustic Imaging and Borehole Magnetic Resonance. Working with 3 GI contractors to complete 75 boreholes to date
Thames Tideway 2012–Present	Land and over water boreholes logged with full geophysical suite including P&S Suspension logging and fluid logging of pump test boreholes
A96 Inverness to Aberdeen 2015–Present	Optical and Acoustic logging of multiple packages, often in difficult access environments
A9 Dualling Perth to Inverness 2014–Present	Optical and Acoustic logging of over 300 boreholes to date, often in difficult access environments
A82 Loch Lomond road improvement.	Optical and Acoustic imaging in 75+ boreholes both overwater and on land

Project	Description
A417 Balloon Round About improvement 2017–Present	Full suite of geophysics in 40 boreholes to date
A465 Heads of the Valley Road Improvement 2015–Present	Acoustic and Optical Logging
Severn Trent Bewley to Frankly Pipeline 2014–2015	Optical and Acoustic logging



Geophysical Logging & Borehole Imaging for Mineral & Gas Exploration



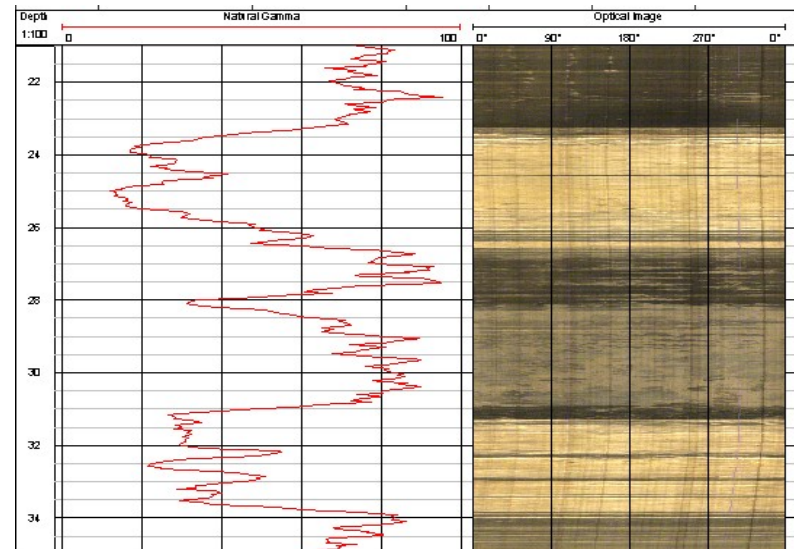
European Geophysical Services provides services for mining and exploration industries.

The aim is to provide solutions of genuine economic benefit to clients.

Innovative technology coupled with professional and practical skills enables the company to provide a service that is second to none in terms of performance, competence and value.



Example Gamma and Optical logs



Environmental Logging



As international concern for the environment continues to rise, so does the need for environmental geophysics to meet legislation and plan for any remedial action. From contamination and ground-water monitoring to CCTV inspection surveys, European

Geophysical Services can provide surveys to support a wide range of investigations.

Applications

- Contaminated land
- Water quality
- Saline intrusions
- Evaluation and condition assessment of monitoring boreholes
- CCTV surveys



Geothermal Logging



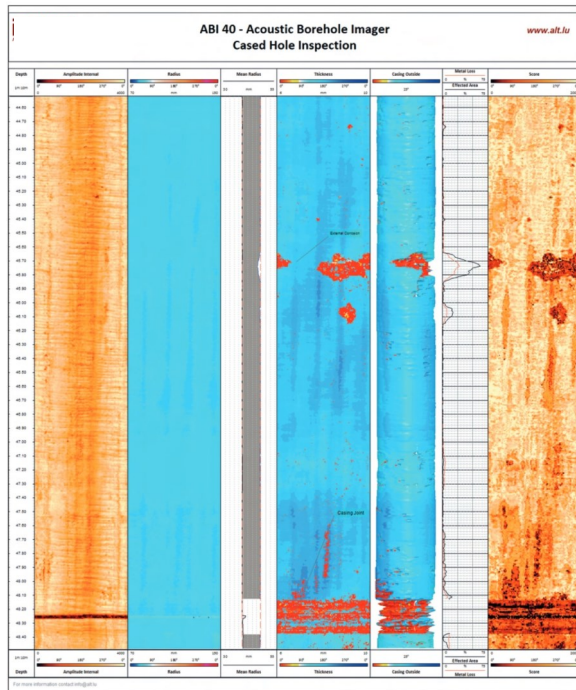
Geothermal wells are an expensive part of any geothermal development, so data is essential for construction, development and maintenance. European Geophysical Services has experience working on deep geothermal projects and open and closed loop systems.

Open Loop

An open loop system relies on two wells (one supply and one return) to pipe clean ground water directly from a nearby aquifer to an indoor geothermal heat pump.

Closed Loop

A closed loop geothermal system continuously circulates a heat transfer solution in a completely closed loop of plastic piping.



Visual well condition reports

A well condition report can help you identify any possible defects/unwanted ingress or casing leaks and plan for any remedial action. Data can be presented in a choice of formats.

Casing investigations- condition, thickness/ cement bond

We can help evaluate casing condition in existing, new-drill wells and decommissioning projects in a variety of ways. We can ascertain casing thickness, locate joins and collars and determine cement bond.

Flow properties in groundwater studies

Interpretation of flowmeter logs can determine depth, direction and rate of groundwater flow in both individual well and across multi-well sites.

Litho-stratigraphic interpretation

Formation log interpretation can determine lithology and stratigraphy in a given borehole and identify zones of interest

Mechanical and physical rock properties

Processing and interpretation of sonic (seismic) logs can help obtain a range of rock strength properties such as P and S Wave velocities

Structural image log interpretation

We can interpret borehole image logs to provide information on structural features such as discontinuity type, dip, dip direction, aperture and frequency.

REPORTING

In addition to the on-site capturing of well log data, EGS can further increase the value of an investigation by offering a comprehensive data processing and reporting service. All log data is verified, depth matched and borehole- corrected and can be digitised and composited in cutting edge software to suit any individual needs

Types of reports

- Visual well condition reports
- Casing investigations
- Flow properties in groundwater studies
- Litho-stratigraphic interpretation
- Mechanical and physical rock properties
- Structural image log interpretation

SAFETY

We take Health and Safety training extremely seriously. All our personnel have the following training as a minimum:

- Emergency First Aid (including AED)
- HABC Level 2 Award I Safe Moving and Handling 9QCF)
- CSCS Academically Qualified Person
- ESS Confined Space Entry including the use of escape sets
- EUSR National Water Hygiene Card
- Radiation Protection Supervisor (RPS) level trained
- Advanced Driver Training (road based). Off road driver training including self-recovery



MISSION STATEMENT AND VALUES

To provide high quality, dependable, integrated and customised borehole surveys carried out by qualified, experienced and dedicated engineers. Our core values are:

Quality

We ensure that logging engineers operate according to safe procedures, tools are calibrated and are well maintained and tested and that results are presented in a way that makes informed decision making easy.

Expert

All our engineers have the following skills and training: BSc in Geology, Geophysics, EUSR Water Hygiene, Confined Space training, Manual Handling, REC First Aid, On- Road Driver Training and Radiological Supervisor Training.

Reliability

As the trusted partner for water, utility, engineering and site investigation companies we can be relied upon to get the job done on time and to schedule.

Personal

We will always take a customer focused approach and aim to provide a personal and helpful service that is customised to client needs.

Ingenuity

No two jobs are the same and we can offer customised borehole surveys. From modifying equipment to solving tricky access issues, our team members are solution oriented.



EUSR NATIONAL WATER BLUE CARD COURSE

All UK Water Companies require individuals entering clean water networks, known as restricted operations, to have a National Water Hygiene registration.

If any member of your staff requires this certification, we can deliver this training via Zoom. Contact us for further information.

Benefits

- Can be delivered via distance learning for up to 12 people
- The core skills to prevent water contamination
- Improve your skills to help create a long-standing career pathway
- Counts towards CPD



HOW TO GET IN TOUCH

WEB

.....

Visit www.europeangeophysical.com

To complete the quick contact form, click contact on the top right corner and the form will automatically load. Alternatively, email office@europeangeophysical.com.

PHONE

.....

Call 01930 210710 and the team will be happy to help.

FIND US

.....

Sansaw Business Park, Hadnall, Shrewsbury, SY4 4AS

Coming from the North

Head South from Whitchurch on the A49 for about 10 miles. You'll pass through the village of Preston Brockhurst. After a mile and a half turn right signposted Yorton, Clive and Sansaw Business Park. Follow the road for about half a mile and then take the left into the Business.


Coming from the South

From the M54- A5, follow signs for the A49 and Whitchurch. You'll pass through the village of Hadnall. After half a mile turn left signposted Yorton, Clive and Sansaw Business Park which is clearly signposted.



**EUROPEAN
GEOPHYSICAL
SERVICES**

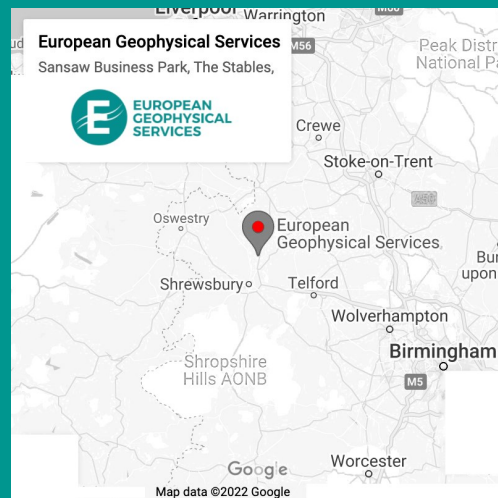
 01930 210710

 office@europeangeophysical.com

 www.europeangeophysical.com

Address:

European Geophysical Services
22 The Stables
Sansaw Business Park
Hadnall
Shrewsbury
SY4 4AS



Follow us on LinkedIn 



Water



Environmental



Geotechnical



Mining



Geothermal



Minerals

 www.europeangeophysical.com  **01939 210710**